



LANKO

PANEL ADHESIVE

POLYMER MODIFIED, LIGHTWEIGHT PANEL ADHESIVE



ECO FRIENDLY



HIGH STRENGTH



NON SHRINK

DESCRIPTION

Lanko Panel Adhesive is a high quality, thin bed, cementitious adhesive that is specially formulated for fixing Light Weight Panels. It is polymer modified and fibre reinforced to prevent hairline cracks, and strengthen the adhesion between panels, ensuring optimum strength and fire rating performance of the completed installation.

USES

Lanko Panel Adhesive is specially formulated for bonding of various Light Weight Panel wall / ALC wall systems.

ADVANTAGES

- Compatibility with various light weight panels / ALC wall system.
- Fibre reinforced to prevent hairline cracks from occurring.
- Premixed for ease of use and good consistent quality.
- Water resistant and good workability.
- High flexural and bonding strength due to polymer modification of the mortar.
- Good weather resistance and highly durable.
- Non-combustible.

TECHNICAL DATA

Compressive Strength	5 - 15 N/mm ²
Tensile Adhesion Bond Strength 28 days	> 0.5 N/mm ²
Tensile Adhesion Bond Strength After water immersion, 28 days	> 0.5 N/mm ²
Tensile Adhesion Bond Strength After heat ageing, 28 days	> 0.5 N/mm ²
Pot Life	Approx. 2 hrs

Specifications are subject to change without notification. Results shown are typical but reflect test procedures used. Actual field performance will depend on installation methods and site conditions.

SURFACE PREPARATION

Substrate should be cleaned and loose materials, dust, oil or traces of foreign materials removed.

Damp the substrate with water before application.

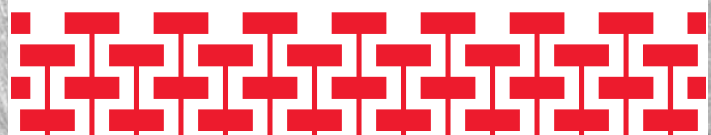
MIXING

Add approximately 6.0 - 6.5 litres of water to 25 kg of Lanko Panel Adhesive. Mix thoroughly using an electrical mixer or a paddle mixer for 3 to 5 minutes until the desired homogeneous mortar paste is achieved. Ensure the mix is free from lumps before use.

Allow the mixture to stand for 5 -10 minutes, and remixed before use.



PAREX
Building expertise, together





PANEL ADHESIVE

APPLICATION

Lanko Panel Adhesive can be applied to panel joint with an appropriate trowel or pumped to fill the gap between panels. The material can be applied at a recommended thickness of 2 - 15 mm. Ensure good contact is achieved between joint adhesive and panel surface.

For sealing and grouting of top and bottom of panels, Lanko Panel Grout ECO with high compressive strength and non-shrink properties is recommended.

COVERAGE

Coverage (per mm thick) : Approx. 20m² / 25 kg.

PACKAGING

Lanko Panel Adhesive is supplied in 25 kg bag.

SHELF LIFE

Shelf life up to 12 months in unopened bags, stored in a cool dry elevated position.

HEALTH & SAFETY

Lanko Panel Adhesive is non-hazardous. In case of eye contact, wash with plenty of water. If irritation persists, seek immediate medical attention. Refer to safety data sheet.

Disclaimer

The use of this product is beyond the manufacturer's control and liability is restricted to the replacement of material proven faulty. The manufacturer is not responsible for any loss or damage arising from incorrect usage. Specifications are subjected to changes without prior notice. Before application, customers and users are requested to check that they have the latest version of this document from our website www.parexgroup.com.sg

PAREXGROUP PTE LTD

28 TUAS SOUTH AVENUE 8, SINGAPORE 637648

TEL: (65) 6861 0632 FAX: (65) 6862 3915

EMAIL: SALES@PAREXGROUP.COM.SG

WEBSITE: WWW.PAREXGROUP.COM.SG

ONLINE STORE: DAVCO-ONLINE.COM.SG

ParexGroup, a French multi-national company with headquarters in Paris, is a leading manufacturer of speciality products for the construction industry with operations in more than 20 countries, and our 2700 people around the world are the cornerstone of our growing organization.

Updated TM66 Jul 2018



Certificate SG09/02195



Certificate SG95/06111



Certificate SG09/50075



ISO 14064 : 2006
Certificate GMS-C / GHG / 0002

